

Oracle® Utilities Work and Asset Management

Installation Guide for WebLogic

Release 1.9.0.3 on Windows

E24320-01

July 2011

Oracle® Utilities Work and Asset Management Installation Guide for WebLogic for Release 1.9.0.3 on Windows

Copyright ©1986, 2011, Oracle and/or its affiliates. All rights reserved.

Primary Author: TUGBU Documentation

Contributing Author: n/a

Contributor: n/a

This software and related documentation are provided under a license agreement containing restrictions on use and disclosure and are protected by intellectual property laws. Except as expressly permitted in your license agreement or allowed by law, you may not use, copy, reproduce, translate, broadcast, modify, license, transmit, distribute, exhibit, perform, publish, or display any part, in any form, or by any means. Reverse engineering, disassembly, or decompilation of this software, unless required by law for interoperability, is prohibited.

The information contained herein is subject to change without notice and is not warranted to be error-free. If you find any errors, please report them to us in writing.

If this software or related documentation is delivered to the U.S. Government or anyone licensing it on behalf of the U.S. Government, the following notice is applicable:

U.S. GOVERNMENT RIGHTS

Programs, software, databases, and related documentation and technical data delivered to U.S. Government customers are “commercial computer software” or “commercial technical data” pursuant to the applicable Federal Acquisition Regulation and agency-specific supplemental regulations. As such, the use, duplication, disclosure, modification, and adaptation shall be subject to the restrictions and license terms set forth in the applicable Government contract, and, to the extent applicable by the terms of the Government contract, the additional rights set forth in FAR 52.227-19, Commercial Computer Software License (December 2007). Oracle America, Inc., 500Oracle Parkway, Redwood City, CA 94065.

This software or hardware is developed for general use in a variety of information management applications. It is not developed or intended for use in any inherently dangerous applications, including applications which may create a risk of personal injury. If you use this software or hardware in dangerous applications, then you shall be responsible to take all appropriate fail-safe, backup, redundancy and other measures to ensure its safe use. Oracle Corporation and its affiliates disclaim any liability for any damages caused by use of this software or hardware in dangerous applications.

Oracle and Java are registered trademarks of Oracle and/or its affiliates. Other names may be trademarks of their respective owners.

This software or hardware and documentation may provide access to or information on content, products and services from third parties. Oracle Corporation and its affiliates are not responsible for and expressly disclaim all warranties of any kind with respect to third party content, products and services. Oracle Corporation and its affiliates will not be responsible for any lost, costs, or damages incurred due to your access to or use of third party content, products or services.

Contents

Preface	4
Audience	4
Related Documents	4
Conventions	5
Supported Platforms and Hardware Requirements.....	6
Supported Platforms	6
Support for Software Patches and Upgrades.....	7
WebLogic Installation Guide.....	8
Required Installation Tasks.....	8
Target Environment.....	9
Install Components in Target Environment	9
Upgrade Steps	9
1.0 Install Java SE Development Kit 6 Update 23 64-bit	9
2.0 Install WebLogic Server 10.3.4.0	10
3.0 Install Oracle Forms 11.1.1.2	15
4.0 Install Oracle Forms 11.1.1.4	17
5.0 Configuring Oracle Forms 11g 11.1.1.4	18
6.0 Install Oracle Utilities Work and Asset Management 1.9.0.3	22
7.0 Oracle Utilities JDBC Configuration	23
8.0 Deploy Oracle Utilities Work and Asset Management 1.9.0.3	27
9.0 Load Clean or New Database	32
Post Installation Considerations	33

Preface

This guide provides information needed to install Oracle Utilities Work and Asset Management in a Windows operating system application server.

Audience

Oracle Utilities Work and Asset Management Upgrade Installation Guide for Windows is intended for anyone installing Oracle Utilities Work and Asset Management Release 1.9.0.3 on Windows.

Related Documents

For more information on this release, refer to the following related documentation.

- *Oracle Utilities Work and Asset Management Configuration Guide for Release 1.9.0.3*
- *Oracle Utilities Work and Asset Management Installation Guide for OAS Release 1.9.0.3 on Linux OS Application Server* - New installation on OAS/Linux OS
- *Oracle Utilities Work and Asset Management Installation Guide for OAS Release 1.9.0.3 on Windows OS Application Server* - New installation on OAS /Windows OS
- *Oracle Utilities Work and Asset Management Installation Guide for Weblogic Release 1.9.0.3 on Linux OS Application Server* - New installation on WebLogic /Linux OS
- *Oracle Utilities Work and Asset Management Installation Guide for Weblogic Release 1.9.0.3 on Windows OS Application Server* - New installation on WebLogic / Windows OS
- *Oracle Utilities Work and Asset Management Online Help for Release 1.9.0.3*
- *Oracle Utilities Work and Asset Management Quick Install Guide for Release 1.9.0.3*
- *Oracle Utilities Work and Asset Management Release Notes Guide for Release 1.9.0.3*
- *Oracle Utilities Work and Asset Management Upgrade Install Guide for Release 1.9.0.3 on Linux OS Application Server*
- *Oracle Utilities Work and Asset Management Upgrade Install Guide for Release 1.9.0.3 on Windows OS Application Server*
- *Oracle Utilities Work and Asset Management User Guide for Release 1.9.0.3*

- Oracle Application Server: <http://www.oracle.com/technetwork/middleware/ias/documentation/index.html>
- Oracle Weblogic Server: <http://www.oracle.com/technetwork/middleware/weblogic/documentation/index.html>

- *Oracle® Fusion Middleware Installation Guide for Oracle WebLogic Server 11g Release 1 (10.3.4)*

-
- *Oracle® Fusion Middleware Installation Guide for Oracle Portal, Forms, Reports and Discoverer 11g Release 1 (11.1.1)*
 - https://support.us.oracle.com/oip/faces/secure/km/DownloadAttachment.jspx?attachid=1088873.1:FMW11GFR_INSTALL_PT1
 - https://support.us.oracle.com/oip/faces/secure/km/DownloadAttachment.jspx?attachid=1088873.1:FMW11GFR_INSTALL_PT2
 - https://support.us.oracle.com/oip/faces/secure/km/DownloadAttachment.jspx?attachid=1088873.1:FMW11GFR_INSTALL_PT3
 - https://support.us.oracle.com/oip/faces/secure/km/DownloadAttachment.jspx?attachid=1088873.1:FMW11GFR_INSTALL_PT4
 - https://support.us.oracle.com/oip/faces/secure/km/DownloadAttachment.jspx?attachid=1088873.1:FMW11GFR_INSTALL_PT5

Conventions

The following text conventions are used:

Convention	Meaning
<i>italic</i>	Italic type indicates book titles, emphasis, or placeholder variables for which you supply particular values.
monospace	Monospace type indicates commands within a paragraph, URLs, code in examples, text that appears on the screen, or text that you enter.

Supported Platforms and Hardware Requirements

This section provides information regarding the operating systems and servers on which this release has been tested and certified.

Supported Platforms

The installation has been certified to operate on many operating system, application server, and database server combinations. See below for details on the browser, operating system and application server combinations on which this release has been tested and certified. If you are consulting this matrix in between releases (including service pack and patch releases), you should contact customer support for the most up to date version.

Operating System for the Application Server	Chipset	Application Server	Database Server	Client Operating System
AIX 5.3 (64-bit) TL11 AIX 6.1 (64-bit) TL4	Power 64-bit	Not Supported	Supported Oracle Database versions include 10.2.0.4, 11.1.0.7, and 11.2.0.1, Enterprise or Standard Edition.	Windows XP x86 SP3 (32-bit)
HP-UX 11.31 (64-bit)	Itanium	Not Supported		Windows7 x86 SP1 (64-bit and 32-bit)
Oracle Enterprise Linux 5.4 (64-bit) Red Hat Enterprise Linux 5.4 (64-bit)	x86_64	Oracle Application Server v10g (10.1.2.3) Weblogic Server 10.3.4/Forms 11g 11.1.1.4		Windows Vista x86* (64-bit and 32-bit)
Sun Solaris 10 (64-bit)	SPARC	Not Supported		Oracle Enterprise Linux 5.4 (64-bit)
Windows 2008 Server Enterprise Edition SP2 (64-bit)	x86_64	Weblogic Server 10.3.4/Forms 11g 11.1.1.4		
Windows 2003 Server Enterprise Edition SP2 (64-bit and 32-bit)	x86_64 x86_32	Oracle Application Server v10g (10.1.2.3)		

Client Operating System Specific

Browsers

- Internet Explorer 7.x(32-bit) - not supported on Linux client

-
- Internet Explorer 8.x (32-bit) - not supported on Linux client
 - Mozilla Firefox 3.6.x (32-bit)
 - Mozilla Firefox 4.0 (32-bit)

Java

- Java Virtual Machine Plug-in for Browser - Sun Java Plug-in v1.6.0_26 (32-bit)

Application Server Specific

Java

- JDBC Driver - 10.2.0.4

Mobile Operating Systems

- Windows Mobile 6.5

VM Products

- Oracle VM 2.2

Notes

- Oracle VM may be used to create a virtual machine for either the database or application server operating system. Refer to the Oracle VM Release 2.2 documentation for more information about using Oracle VM.
- Barcoding, Mobile and Charts are not supported on Linux. The supporting software required to run these add-ons (such as rfggen and IIS) does not work with Linux.
- *Windows Vista to be de-supported in a future release.

Support for Software Patches and Upgrades

Due to the ongoing nature of software improvement, vendors will issue patches and service packs for the operating systems, application servers and database servers on top of specific versions that Oracle Utilities Work and Asset Management has been tested with.

If it is necessary to apply an upgrade, please do that in a test environment prior to updating the Oracle Utilities Work and Asset Management production environment.

Always contact Oracle Utilities Work and Asset Management support prior to applying vendor updates that do not guarantee backward compatibility.

WebLogic Installation Guide

This document provides information and steps needed to install Oracle Utilities Work and Asset Management Release 1.9.0.3 in a Windows operating system application server.

Review this entire guide before you begin your installation. Please also note the following:

- This guide applies for new installations on a WebLogic server.
- Refer to the [Supported Platforms and Hardware Requirements](#) section to verify hardware, software and platforms compatible with this release.
- Please note that the person completing the installation must have sufficient DBA privileges. This can be added using:

```
grant create type to <synergen_schema_owner>;
```

Required Installation Tasks

The following major steps are required to correctly apply the upgrade:

- Review the entire Upgrade Guide.
- Review supporting WebLogic Documentation as needed. (See the [Related Documents](#) section in the Preface for references.)
- Download the following:
 - JDK: 6u23 64-bit
 - WebLogic: 10.3.4.0
 - Oracle Portal, Forms, Reports and Discover: 11.1.1.2
 - Oracle Portal, Forms, Reports and Discover: 11.1.1.4
 - WAM 1.9.0.3
- Install Java SE Development Kit 6 Update 23 64-bit (Sun JDK 1.6.0_23)
- Install WebLogic Server 10.3.4.0
- Install Oracle Portal, Forms, Reports and Discover 11.1.1.2 (no configuration)
- Install Patchset "Oracle Portal, Forms, Reports and Discover 11.1.1.4 (upgrade)
- Configure Oracle Forms 11g (creates Domains and Instance)
- Install Oracle Utilities Work and Asset Management 1.9.0.3
- JDBC Configuration
- WAM 1.9.0.3 SIA\Forms Deployment
- Load Clean or New Database

-
- Complete the Post - Installation Considerations Checklist

Target Environment

Throughout this document, reference is made to a 'target environment'. An 'environment' is a complete *Oracle Utilities Work and Asset Management* application environment (Oracle Database instance, Oracle Application Server (forms and reports) instance, SIA instance, Chart Server instance) configured for a 'purpose' such as 'training', 'test', 'production', etc. The installation program will ask you to select the target environment you wish to upgrade.

When upgrading the various components (potentially on different servers), it is essential that you select the same target environment on each server.

Install Components in Target Environment

During the upgrade, you will be asked to run the installation program which will prompt you to select the component that you wish to install.

Installation Program: 'setup.exe' located in the folder where you have unzipped the downloaded service pack files.

The following must be installed:

- SIA Application Server 1.9.0.3
- Oracle Application Server v11g
- Database Objects 1.9.0.3

You can install the components in any order you choose, but each target environment needs to have all components installed and you can only install one component at a time.

Upgrade Steps

Complete the following steps to install the upgrade.

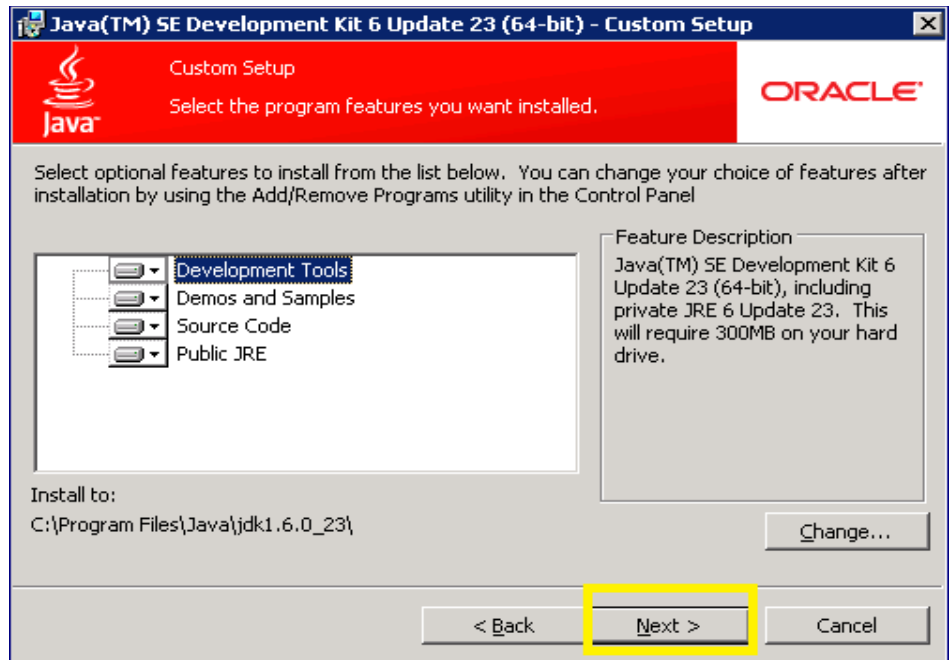
1.0 Install Java SE Development Kit 6 Update 23 64-bit

- 1.1 Launch the JDK installer by selecting jdk-6u23-windows-x64.exe.

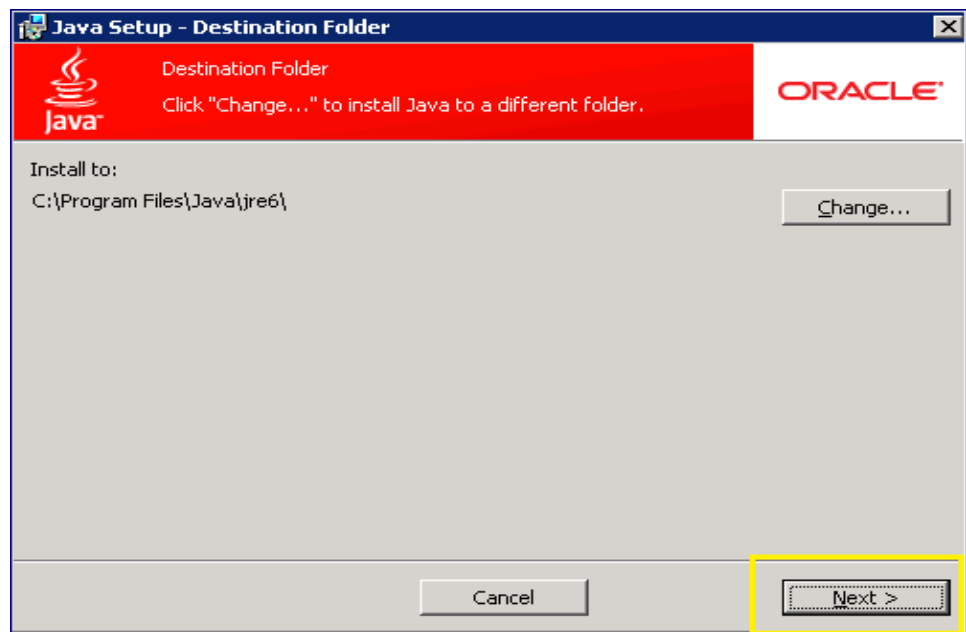
The installation wizard for Java SE Development Kit 6 Update 23 is launched.

- 1.2 Click Next to continue.

- 1.3 Accept all default program features on the Custom Setup screen and click Next to continue.



- 1.4 Select the destination path then click Next to continue.



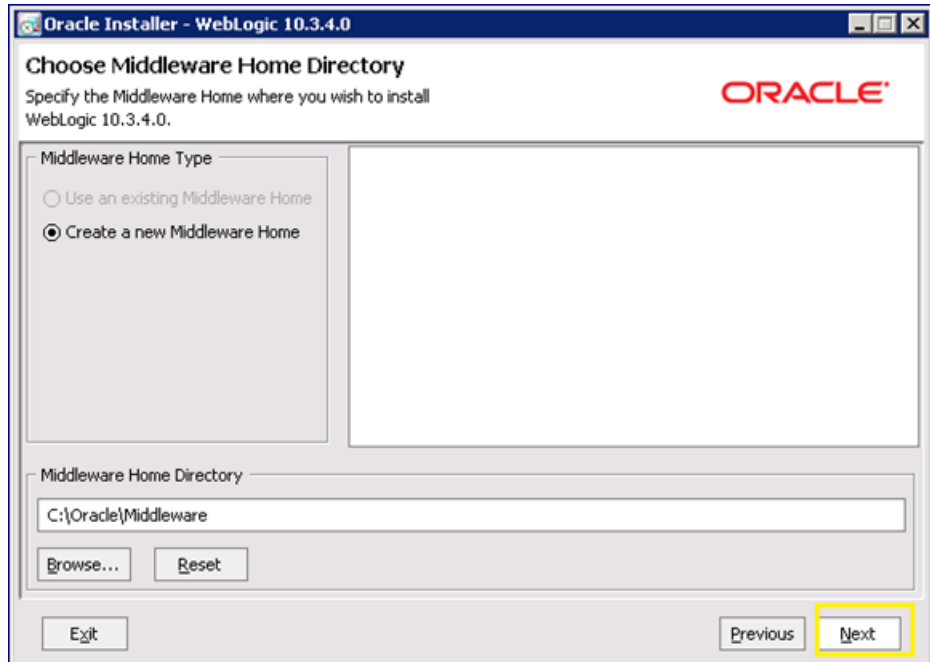
- 1.5 After the installation is complete select Finish to close the installation wizard.
- 1.6 Validate that the program was installed correctly by navigating to the folder where the program was installed.

2.0 Install WebLogic Server 10.3.4.0

- 2.1 Open a command prompt and enter: `java -jar wls1034_generic.jar`
This opens the WebLogic 10.3.4.0 installer wizard.
- 2.2 Click Next to continue from the Welcome screen.

2.3 Select Create a new Middleware Home then enter or Browse to your Middleware Home Directory.

You can keep the default directory or specify a new location.



2.4 Click Next.

The Register for Security Updates screen opens.

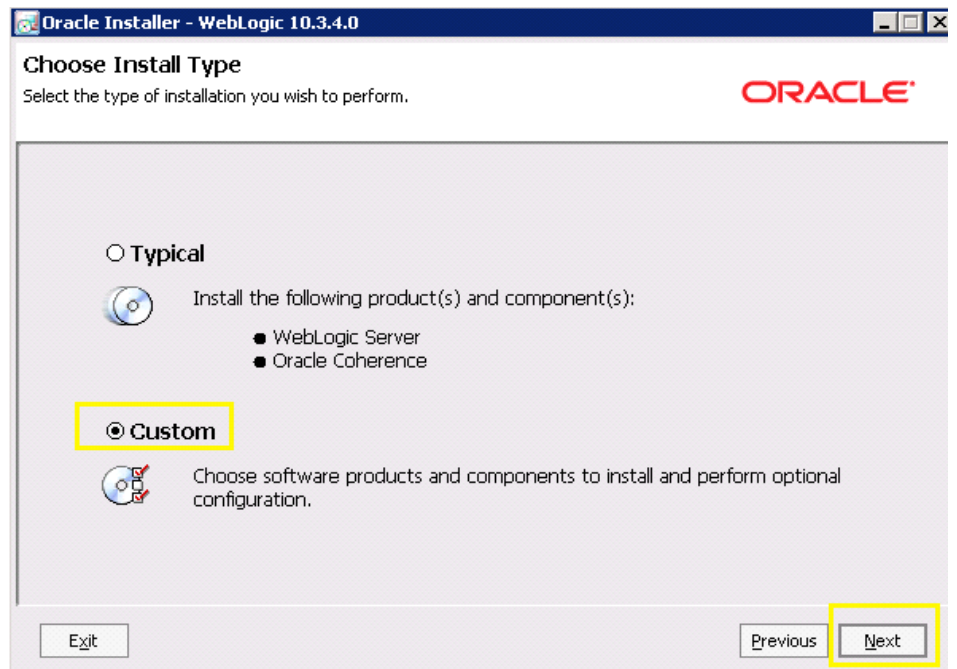


2.5 Enter your e-mail address and check the I wish to receive Security updates via MyOracle Support box.



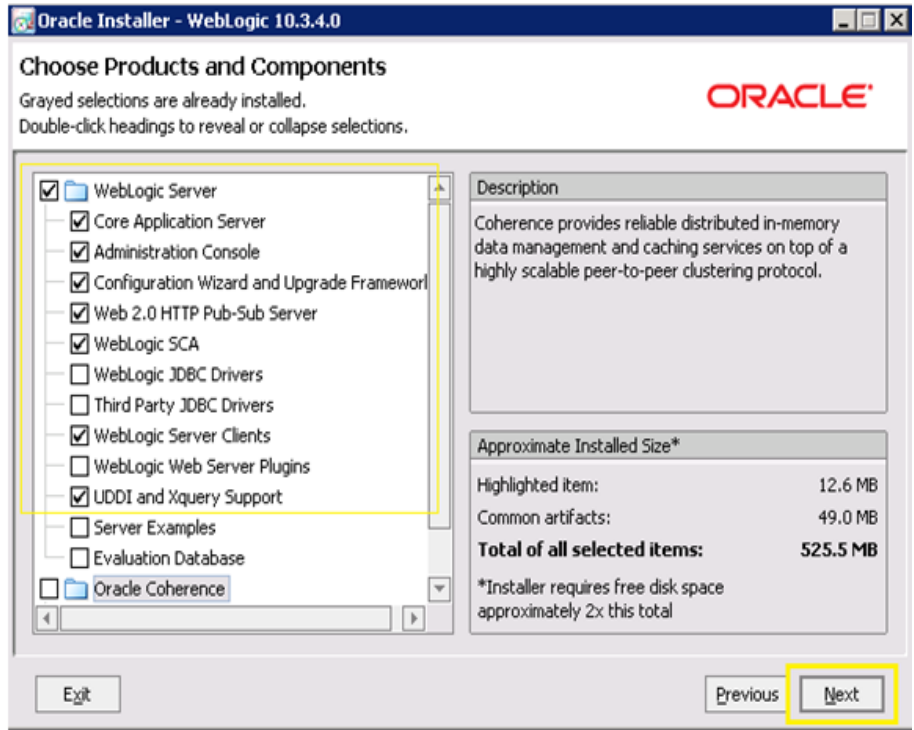
2.6 Enter your password and click Next.

2.7 When asked to choose your installation type, select Custom and click Next.



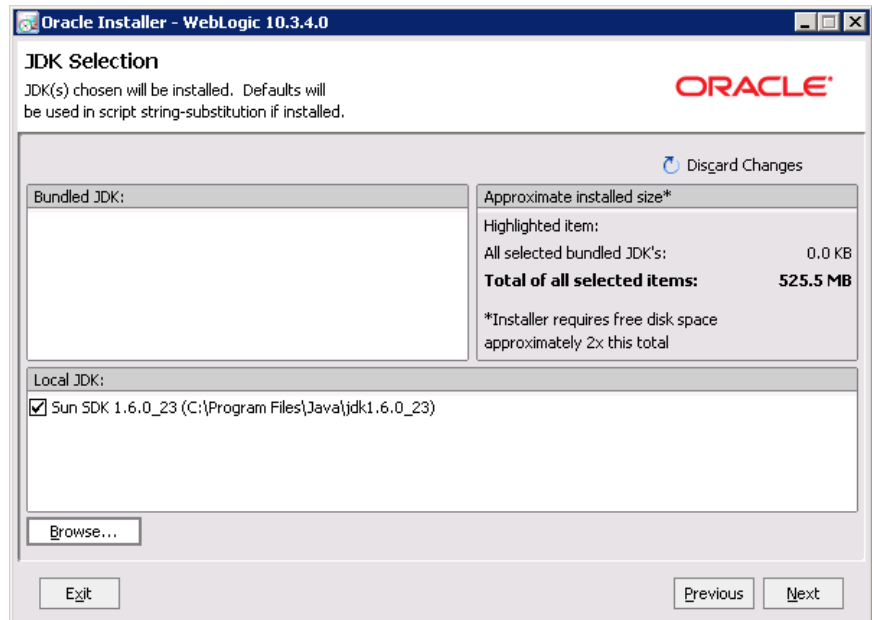
The Products and Components selection screen opens.

2.8 Make the selections as shown then click Next.



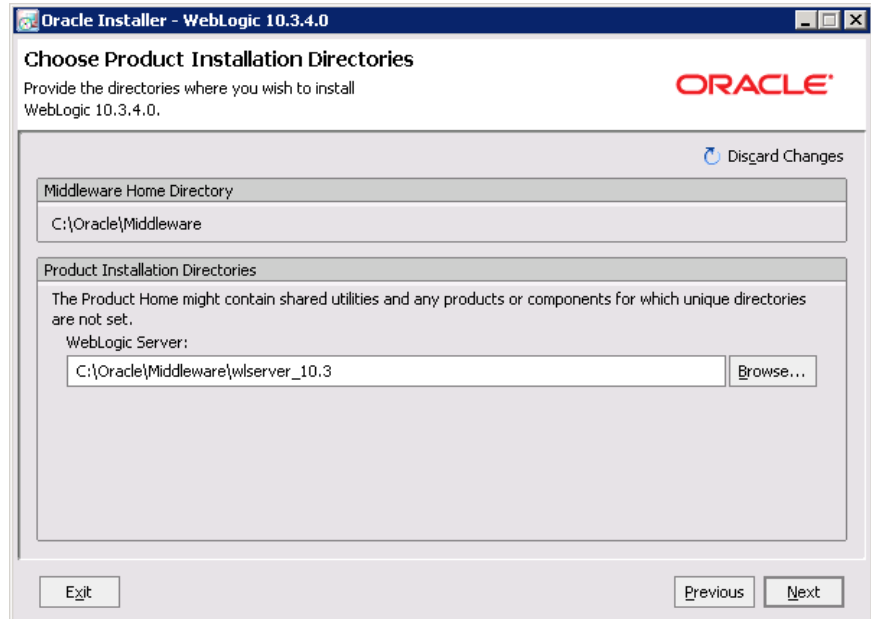
The JDK Selection screen opens.

2.9 Choose the JDK to be installed and click Next.



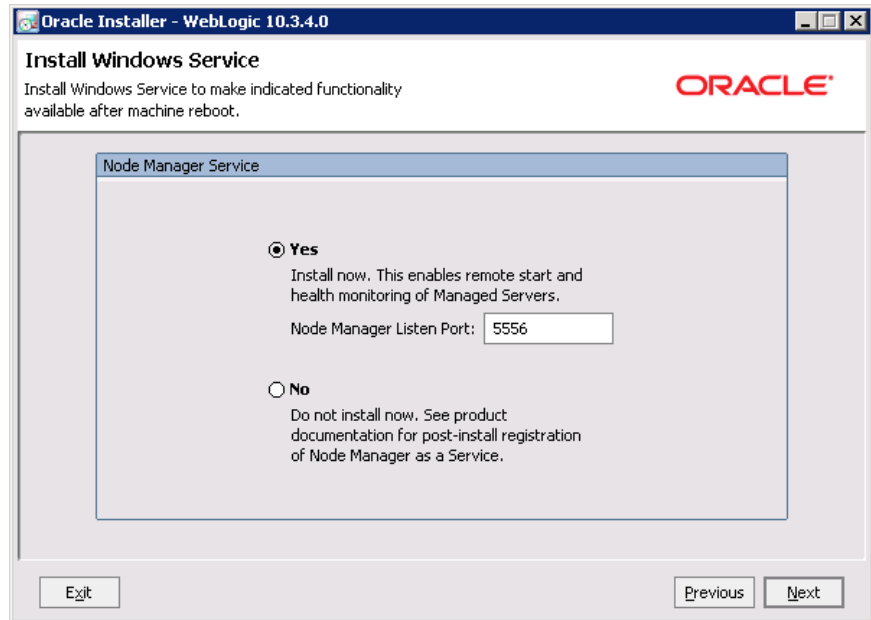
The Product Installation Directories selection screen opens.

2.10 When asked to provide the directory where you wish to install WebLogic, keep the default directory or specify a new location then click Next.



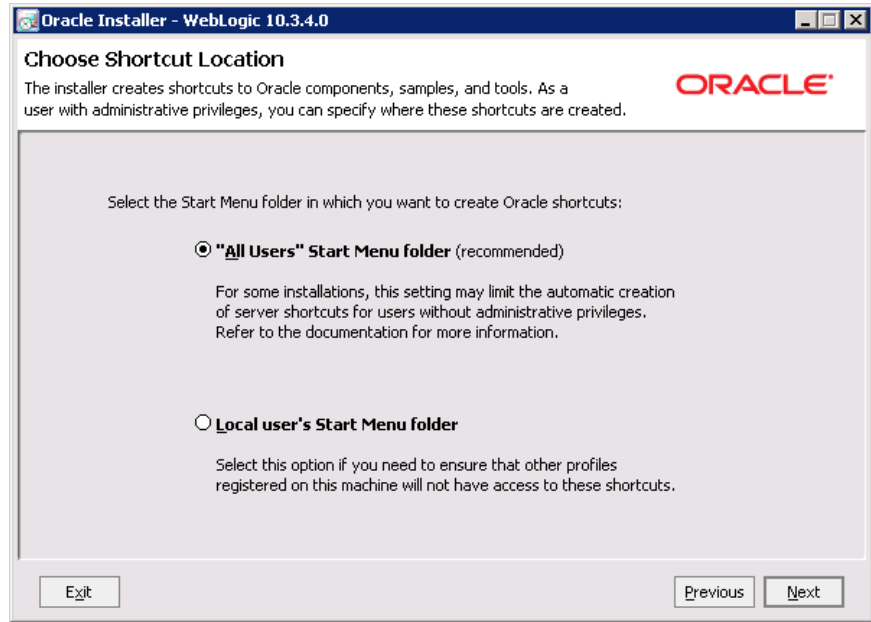
The Install Windows Service screen opens.

2.11 For the Node Manager Service, select Yes and keep the default port, or specify a new value then click Next.



The Shortcut Location screen is displayed.

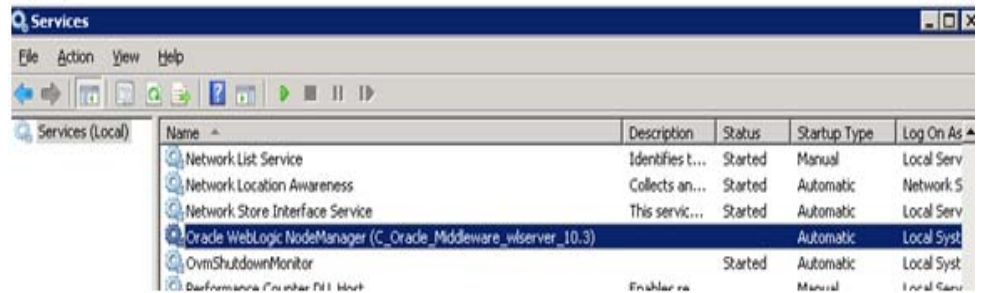
2.12 Choose the default as shown: The Installation Summary page is displayed.



2.13 Review the installation summary and click Next.

If the Run QuickStart box is selected, uncheck the box and click Done. The WebLogic installation is now complete.

2.14 The Windows service "Oracle WebLogic NodeManager (C_Oracle_Middleware_wlserver_10.3)" gets created.

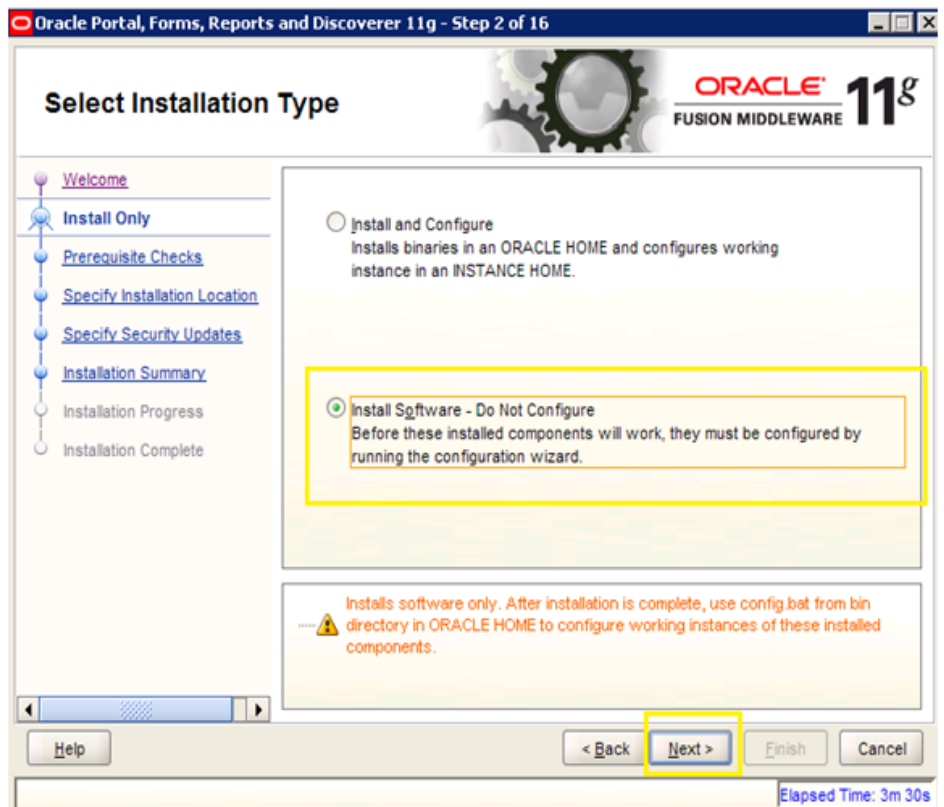


3.0 Install Oracle Forms 11.1.1.2

3.1 Navigate to the Disk1 folder where Oracle Forms 11g 11.1.1.2 directory exists and start the installer Runsetup.exe

The Oracle Fusion Middleware 11g Portal, Reports and Discoverer installer launches. Click Next.

- 3.2 When asked to choose the installation type, select the Install Software - Do Not Configure option and click Next.



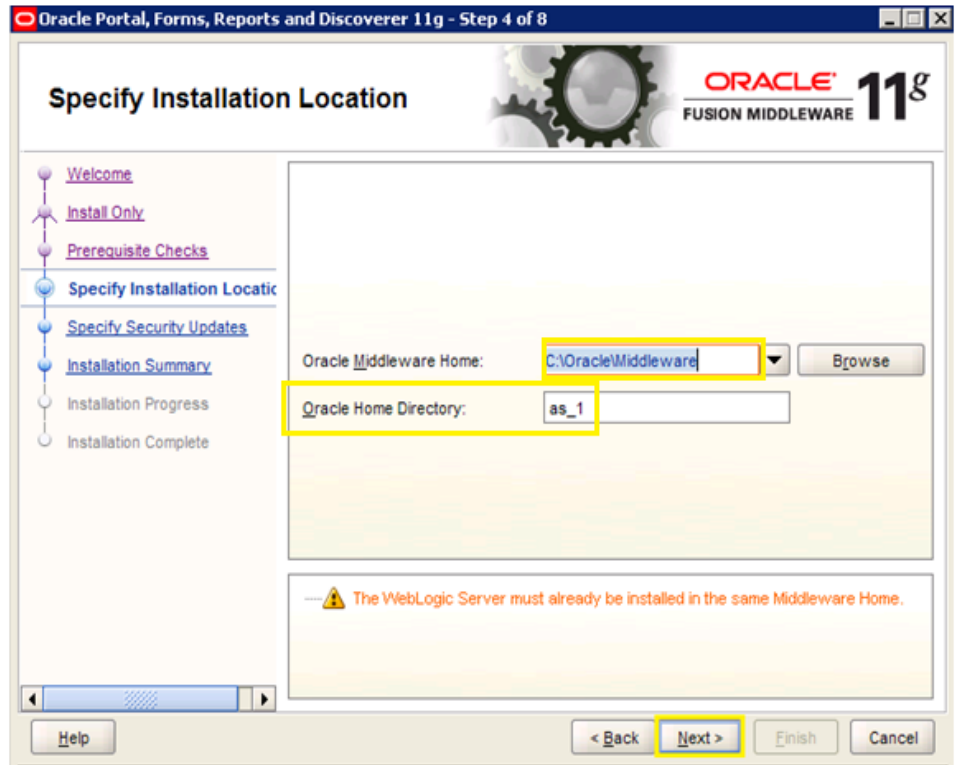
The Prerequisite Checks screen opens.

- 3.3 Once the prerequisite checks are completed, click Next.

The Specify Installation Location screen opens.

- 3.4 Specify the Oracle Middleware Home directory as C:\Oracle\Middleware and Oracle Home Directory as "as_1," then click Next

Note: Oracle Middleware Home directory will henceforth be referred to as %ORACLE_HOME%.



The Specify Security Updates screen opens.

- 3.5 Enter your e-mail address and select “I wish to receive Security updates via MyOracle Support.”
- 3.6 Enter your Oracle Support Password and click Next.

The Installation summary screen opens.

- 3.7 Review the summary and click Install.

The Installation Progress screen displays a progress bar.

- 3.8 Once the installation has progressed 100%, click Next.

The Installation Complete screen opens.

- 3.9 Click Finish.

Oracle 11g Forms, Reports and Discoverer Product Suite is installed successfully.

4.0 Install Oracle Forms 11.1.1.4

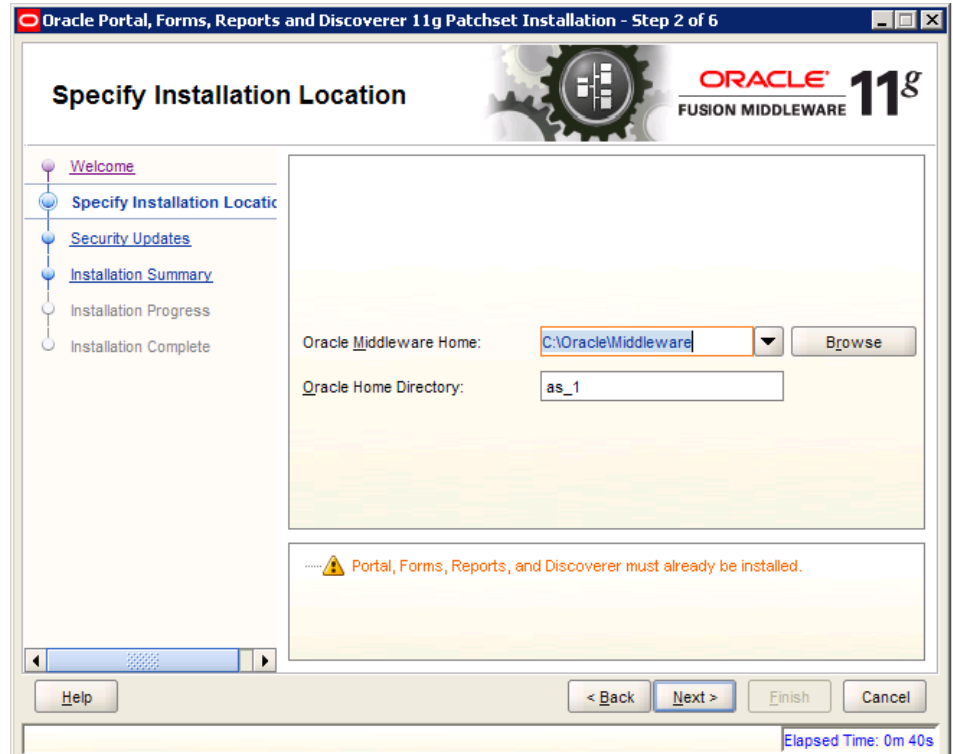
- 4.1 Navigate to the Disk1 folder where Oracle Forms 11g 11.1.1.2 directory exists and start the installer. Runsetup.exe

The Oracle Fusion Middleware 11g Portal, Forms, Reports and Discoverer Patchset installer launches.

- 4.2 Click Next.

The Specify Installation Location screen opens.

- 4.3 Verify that the Oracle Middleware Home and Oracle Home directories are correctly reflected as per the installation of Oracle Portal, Forms, Reports and Discoverer 11.1.1.4.



- 4.4 Click Next.

The Specify Security Updates screen opens.

- 4.5 Enter your e-mail address and select “I wish to receive Security updates via MyOracle Support.”

- 4.6 Enter your Oracle Support Password and click Next.

The Installation summary screen opens.

- 4.7 Review the summary and click Install.

The Installation Progress screen displays a progress bar.

- 4.8 Once the installation has progressed 100%, click Next.

The Installation Complete screen opens.

- 4.9 Click Finish.

5.0 Configuring Oracle Forms 11g 11.1.1.4

- 5.1 Stop Windows service: Oracle WebLogic NodeManager (C_Oracle_Middleware_wlserver_10.3).

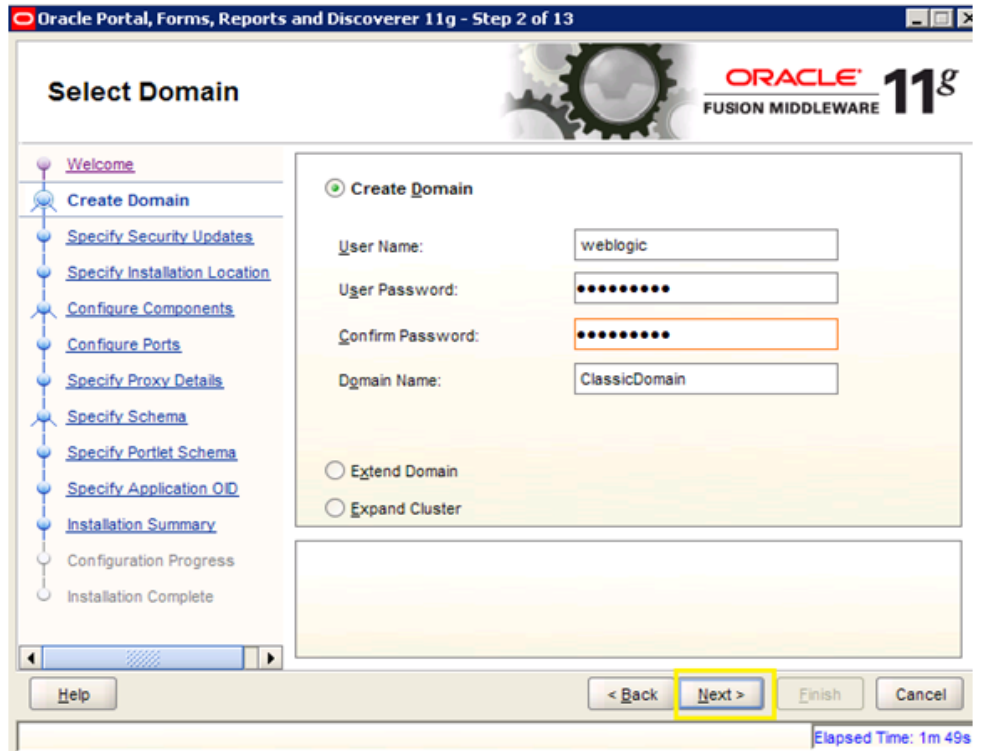
- 5.2 Start the Oracle Portal, Forms, Reports and Discover 11.1.1.4 Configuration Wizard by running “config.bat” from %ORACLE_HOME%\bin

The configuration wizard launches with the Welcome screen.

- 5.3 Click Next.

- 5.4 Enter the user name and confirm a Password. Also enter a valid Domain Name.

Leave other options as shown.



5.5 Click Next.

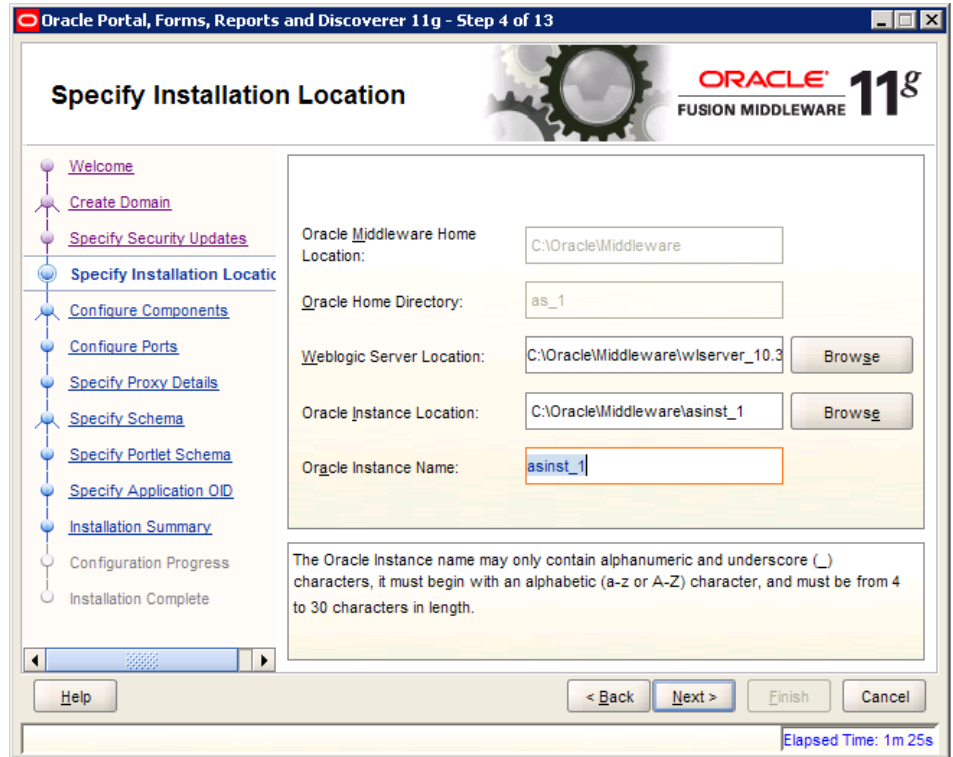
The Specify Security Updates screen opens.

5.6 Enter your e-mail address and select “I wish to receive Security updates via MyOracle Support.” (optional)

5.7 Enter your Oracle Support Password and click Next.

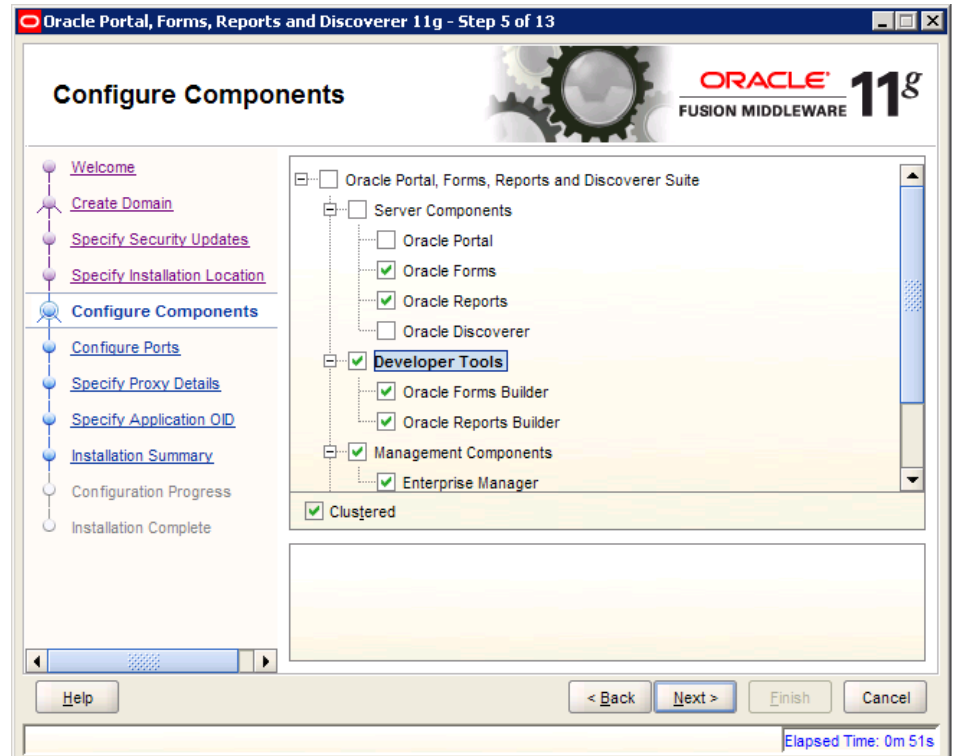
The Specify Installation Location screen opens.

5.8 Enter the appropriate WebLogic Server Location and Oracle Instance Location and Name then click Next.



The Configure Components screen opens.

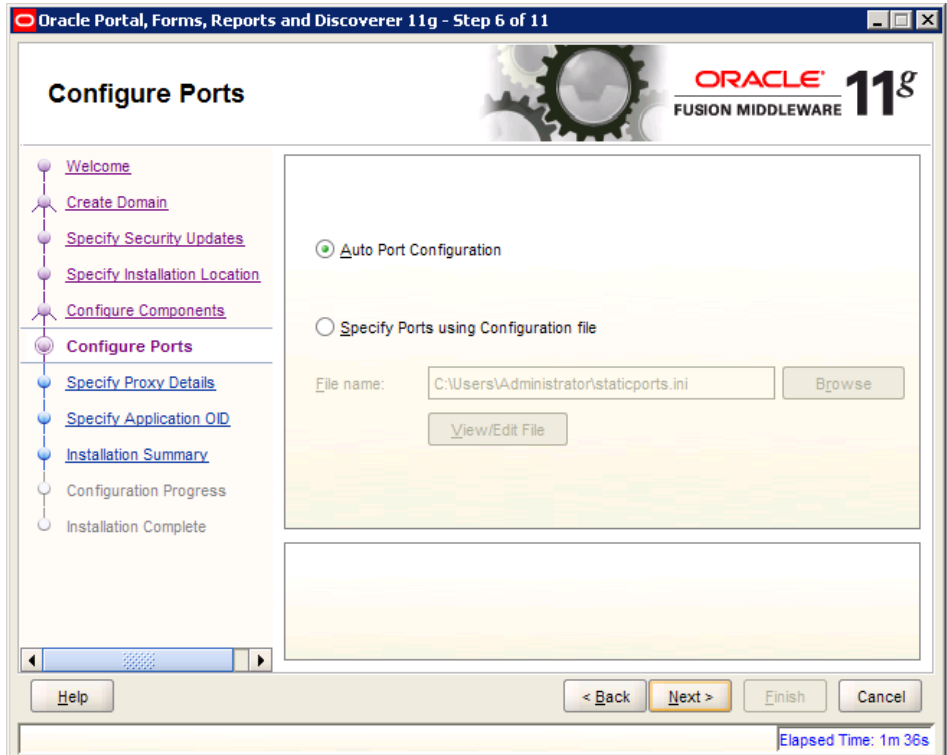
5.9 Ensure that all components are checked as seen below:



The Configure Ports screen opens.

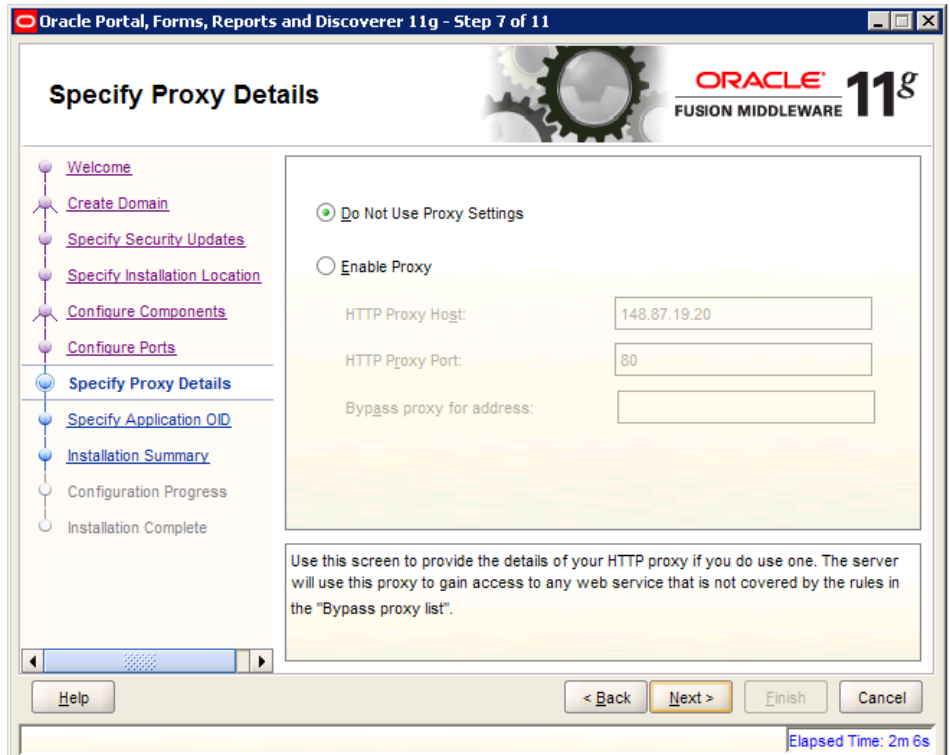
5.10 Choose Auto Port Configuration.

This allows the wizard to choose the ports (recommended). You can also manually configure ports by choosing the option for Specify Ports Using Configuration File.



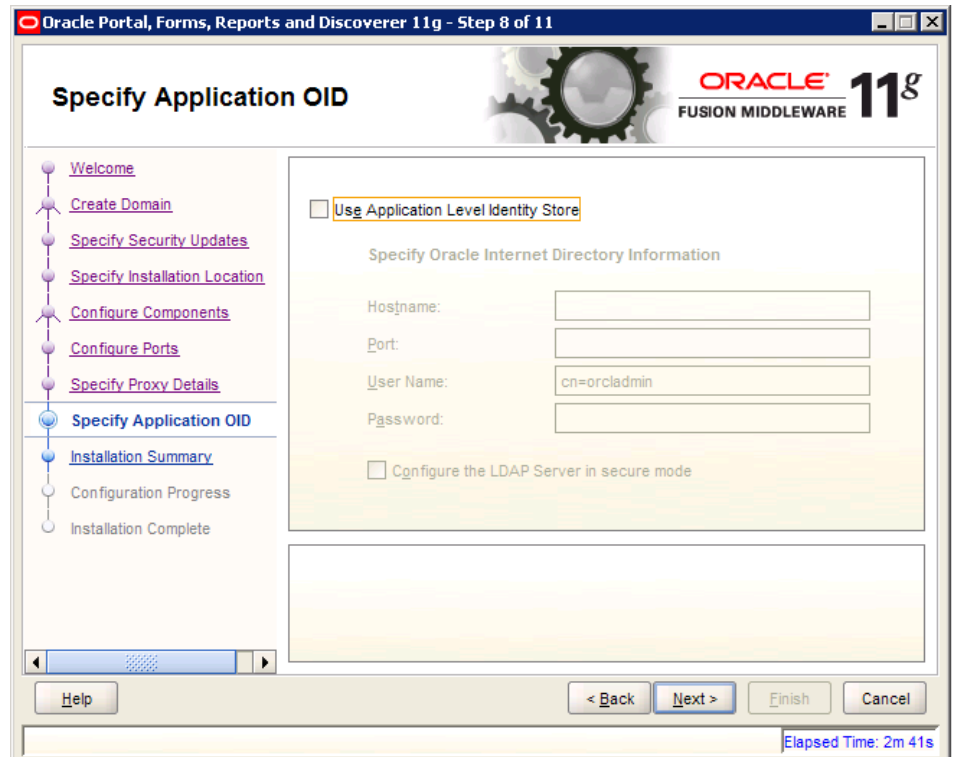
The Specify Proxy Details screen opens.

5.11 Choose “Do Not Use Proxy Settings” and click Next.



The Specify Application OID screen opens.

5.12 De-Select “Use Application Level Identity Store” and click Next.



The Installation Summary screen opens.

5.13 Make sure that the Node Manager service is not running. Review the Installation summary then click Configure.

The configuration progress screen opens.

5.14 Make sure that all configurations show success then Click Next.

The Installation Complete screen opens.

5.15 Click Finish.

Oracle 11g Forms, Reports and Discoverer has been configured successfully.

6.0 Install Oracle Utilities Work and Asset Management 1.9.0.3

Before installing, note the values for the following:

Oracle Domain _____

Oracle Home _____

Oracle Instance _____

Oracle Report Server Name _____

WAM Directory _____

Hostname _____

WAM Instance _____

Database Instance _____

Mail Server _____

Chart Server Hostname _____

Chart Server Port _____

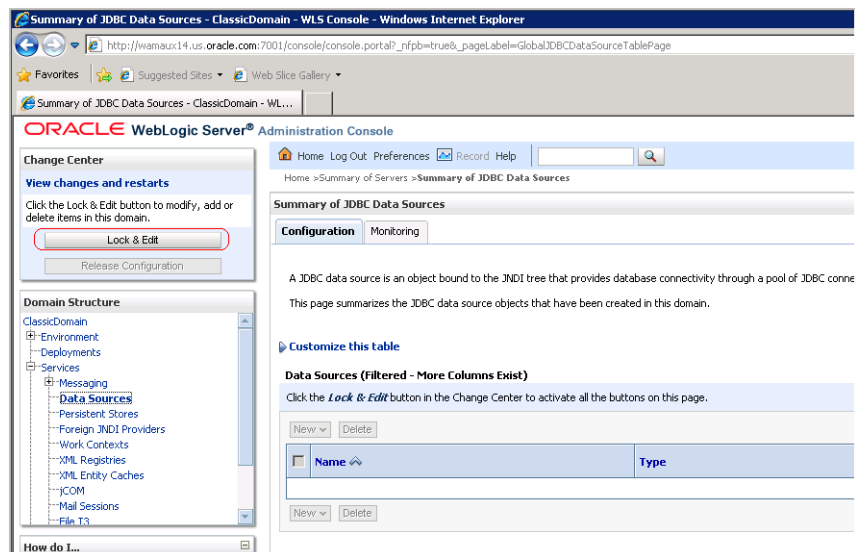
WAM Forms Server Hostname _____

WAM Port _____

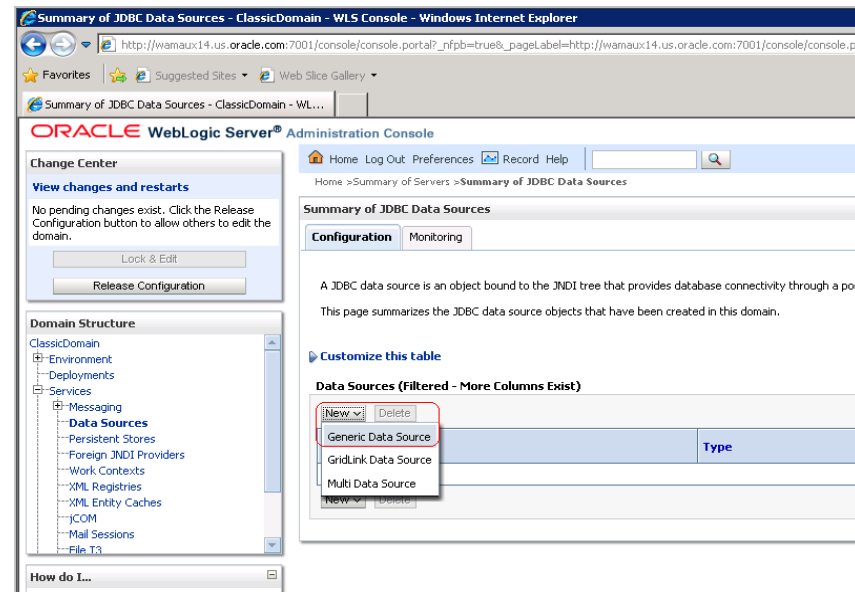
Run setup.exe and respond to the prompts. The install program creates the WAM 1.9.0.3 directory and configures the key components needed for Oracle Utilities Work and Asset Management to run.

7.0 Oracle Utilities JDBC Configuration

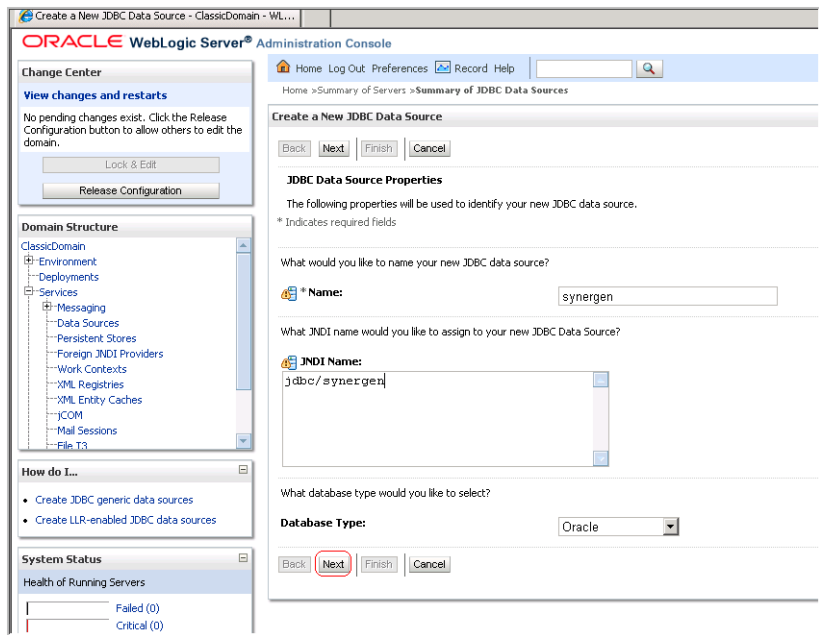
7.1 Login to the WebLogic Server Administration console. Select Data Sources and click Lock & Edit.



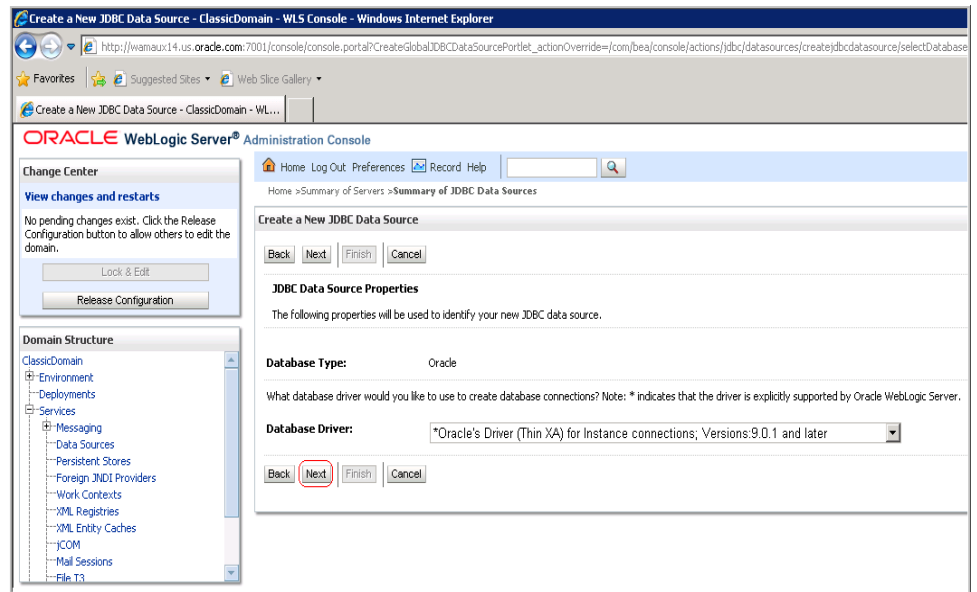
7.2 On the Configuration tab, click New and select Generic Data Source.



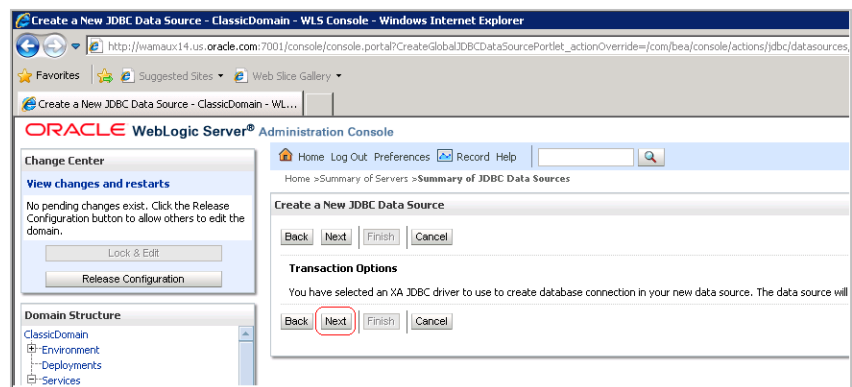
7.3 On the Create a new JDBC Data Source page, enter “synergen” as the name of the JDBC source and “jdbc/synergen” as the JNDI name. Click Next.



7.4 When asked to choose the database driver, select “Oracle Driver (Thin XA) for Instance connections: Versions:9.0.1 and later” click Next.



7.5 On the Transaction Options page click Next.



- 7.6 On the Connection Properties page, enter in the information that is relevant to your environment and click Next. Note that the Database Username that you enter here must have superuser role..

Home > Summary of Servers > Summary of JDBC Data Sources

Create a New JDBC Data Source

Back Next Finish Cancel

Connection Properties

Define Connection Properties.

What is the name of the database you would like to connect to?

Database Name: QA1903X

What is the name or IP address of the database server?

Host Name: 10.147.124.34

What is the port on the database server used to connect to the database?

Port: 1521

What database account user name do you want to use to create database connections?

Database User Name: xadmin_synergen

What is the database account password to use to create database connections?

Password:

Confirm Password:

Back Next Finish Cancel

- 7.7 On the Test Database page, click Test Configuration to check database connectivity. If the test is successful, click Next else re-enter the correct values.

Create a New JDBC Data Source - ClassicDomain - WLS Console - Windows Internet Explorer

http://wmaux14.us.oracle.com:7001/console/console.portal?CreateGlobalJDBCDataSourcePortlet_actionOverride=/com/bee/console/actions/jdbc/datasour...

ORACLE WebLogic Server® Administration Console

Home Log Out Preferences Record Help

Home > Summary of Servers > Summary of JDBC Data Sources

Messages

Connection test succeeded.

Create a New JDBC Data Source

Test Configuration Back Next Finish Cancel

Test Database Connection

Test the database availability and the connection properties you provided.

What is the full package name of JDBC driver class used to create database connections in the connection pool?
(Note that this driver class must be in the classpath of any server to which it is deployed.)

Driver Class Name: oracle.jdbc.xa.client.OracleThinDriver

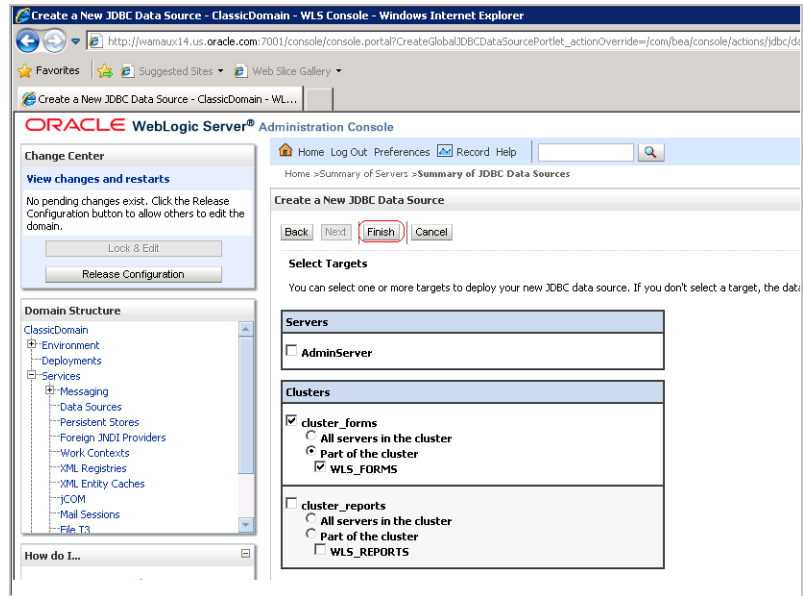
What is the URL of the database to connect to? The format of the URL varies by JDBC driver.

URL: jdbc:oracle:thin:@10.147.124.34:1521:QA1903X

What database account user name do you want to use to create database connections?

Database User Name: xadmin_synergen

7.8 On the Select Target page, check the boxes as shown and click Finish.



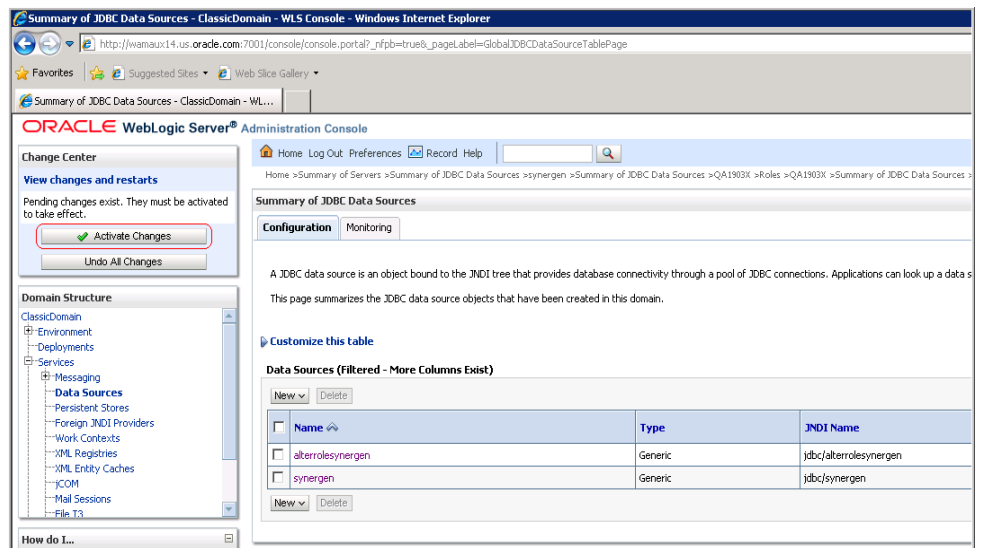
7.9 Repeat steps from 7.3 to 7.8 to create another Data Source entry using the following values in their respective fields:

JDBC data source name = alterrolesynergen

JNDI Name: jdbc/alterrolesynergen

Database User Name: password_reset_user

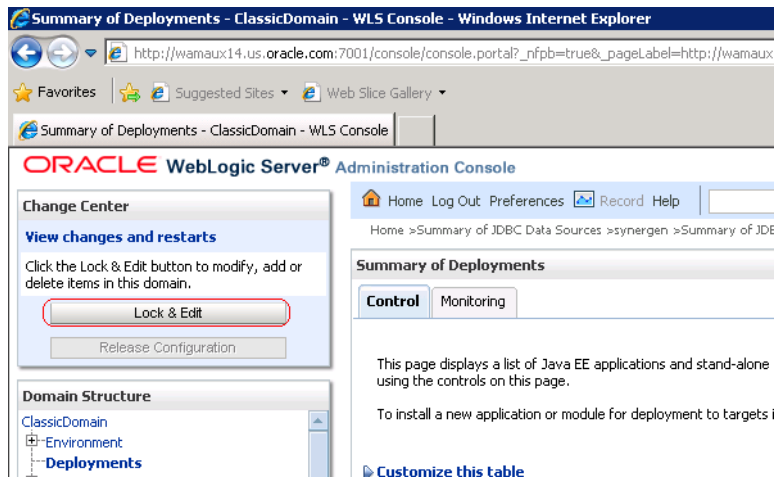
7.10 After both data sources are created, click Activate Changes in order for the changes to take effect.



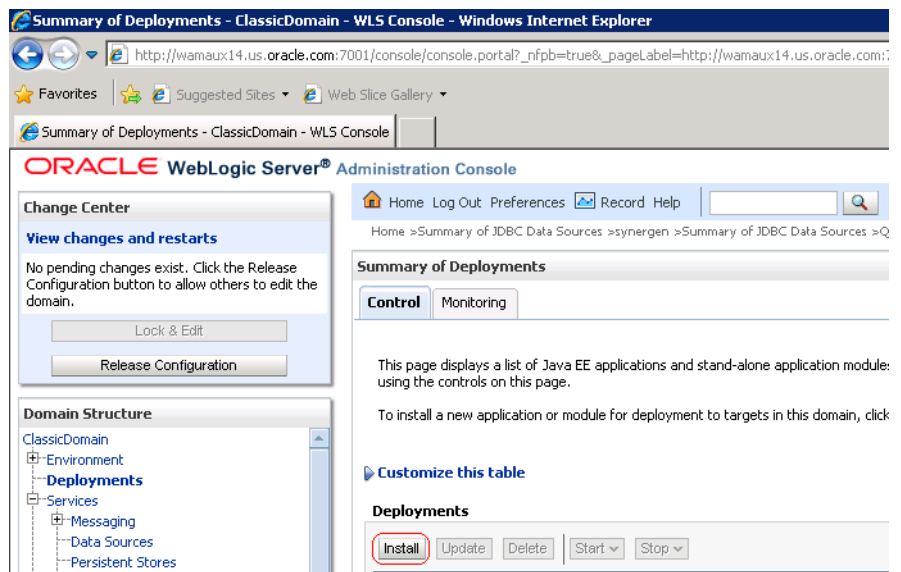
7.11 Make an entry in the tnsnames.ora file located in the Oracle_Instance\config folder for the database connection used in the application.

8.0 Deploy Oracle Utilities Work and Asset Management 1.9.0.3

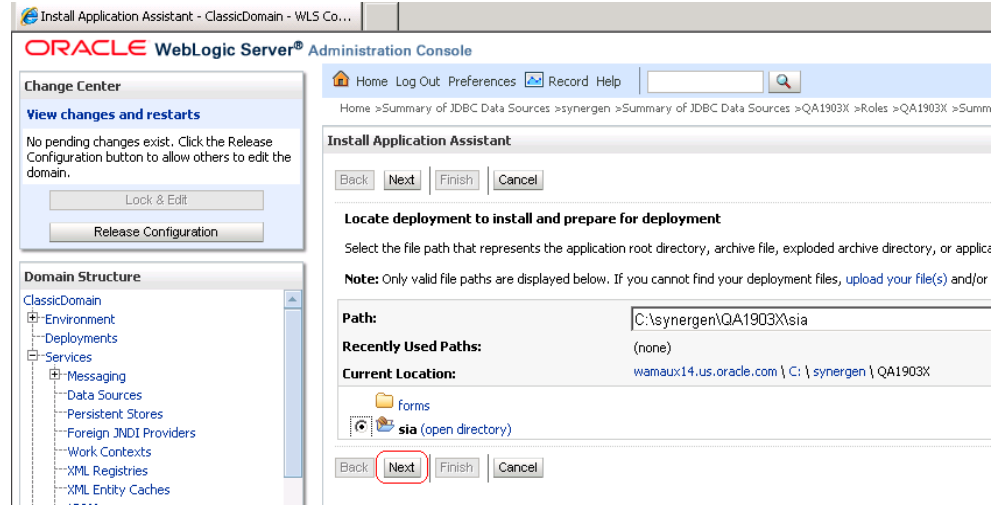
- 8.1 Login to the WebLogic Server Administration console. Select Deployments and click Lock & Edit.



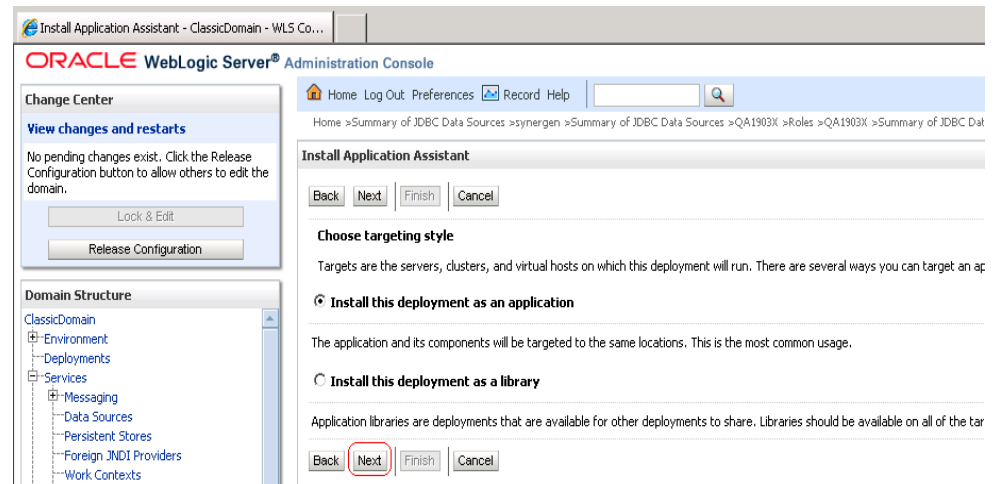
- 8.2 On the Summary of Deployments page, click Install.



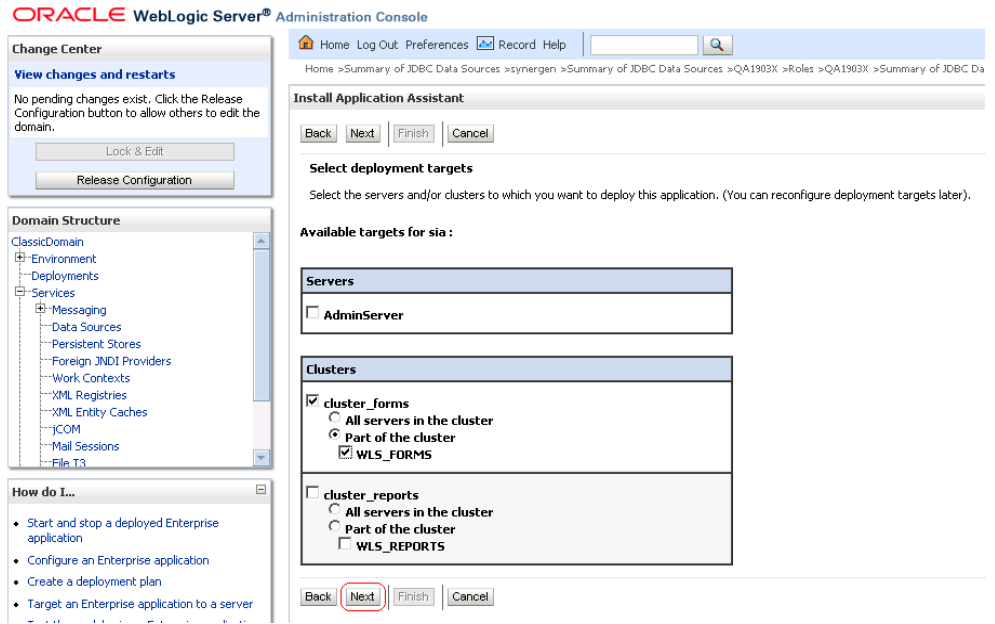
8.3 On the Locate deployment page, enter the path to the sia folder in the Path field and click Next.



8.4 When asked to choose the targeting style, select “Install this deployment as an application” and click Next.

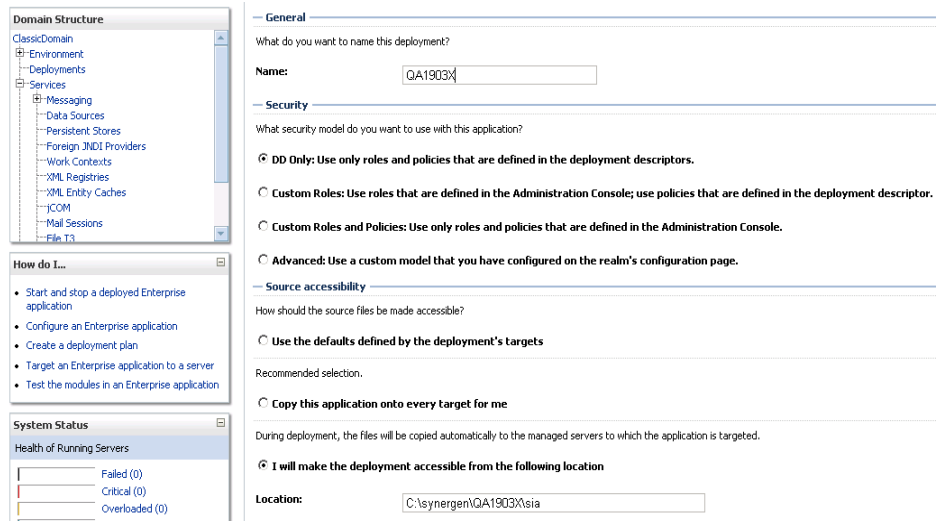


8.5 When asked to select deployment targets, check the boxes as shown and click Next.

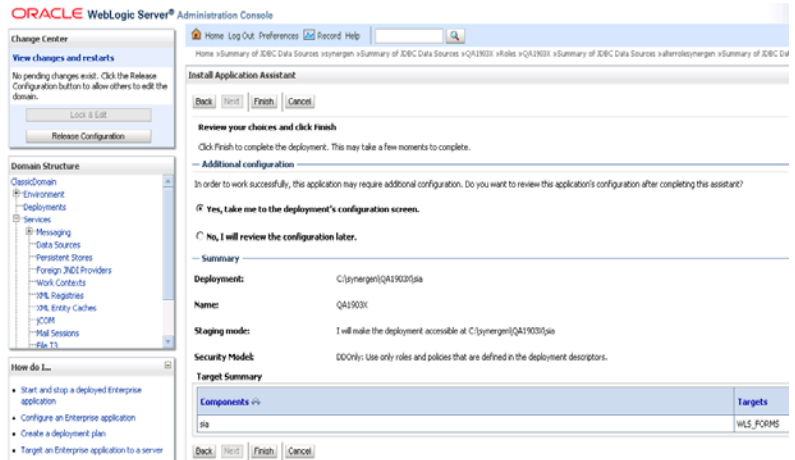


8.6 On the following page, enter the name of the deployment. Make sure it matches the WAM Instance name entered in the worksheet from Oracle Utilities Work and Asset Management 1.9.0.3 Installation section.

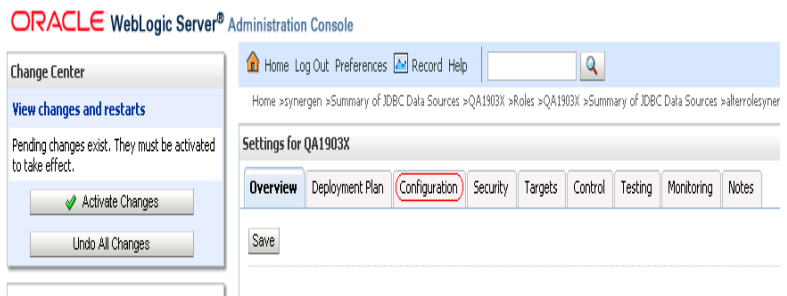
8.7 Select “DD only” as the security model. Select “I will make the deployment accessible from the following location” and click Next.



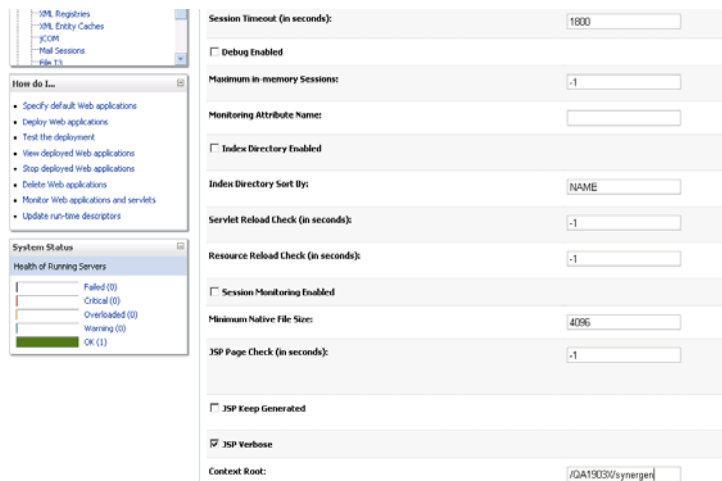
8.8 On the Additional Configuration page, select “Yes, take me to the deployment’s configuration screen” and click Finish.



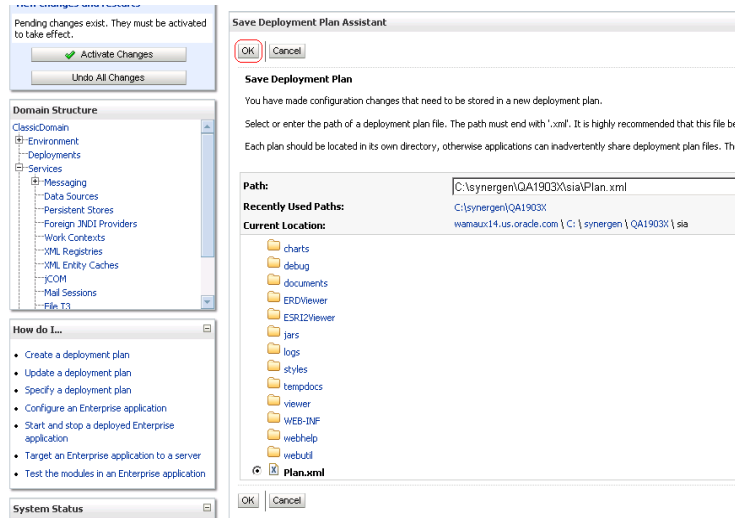
8.9 From the main page of the Administration console, click the Configuration tab.



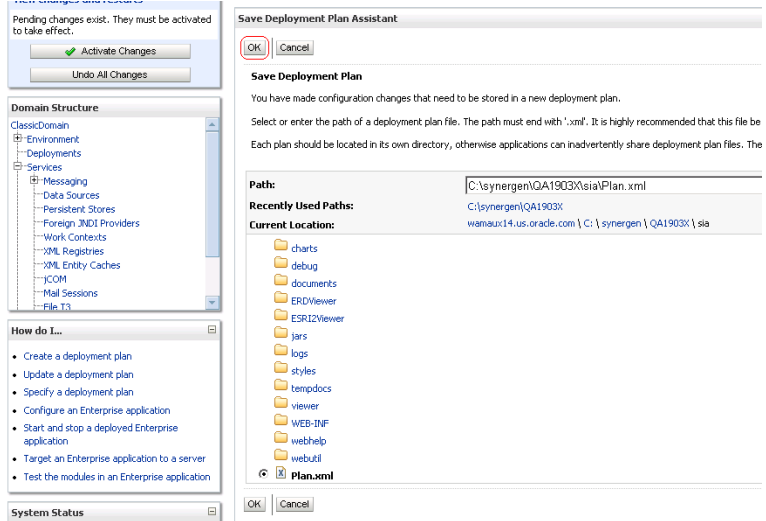
8.10 On the General sub tab, enter “1800” against Session Timeout (in seconds). Enter “<WAM Instance>/synergen” as the Context Root and click Save.



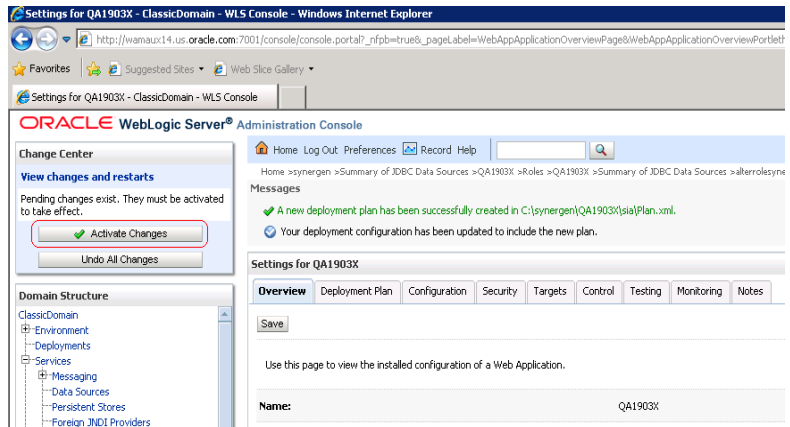
8.11 On the Save Deployment page, click OK.



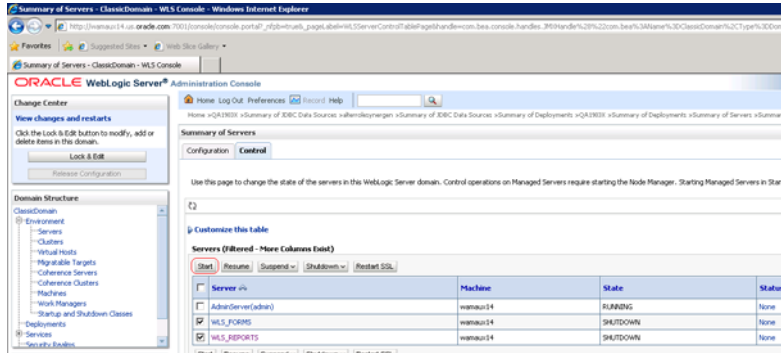
8.12 In the Change Center, click Activate Changes.



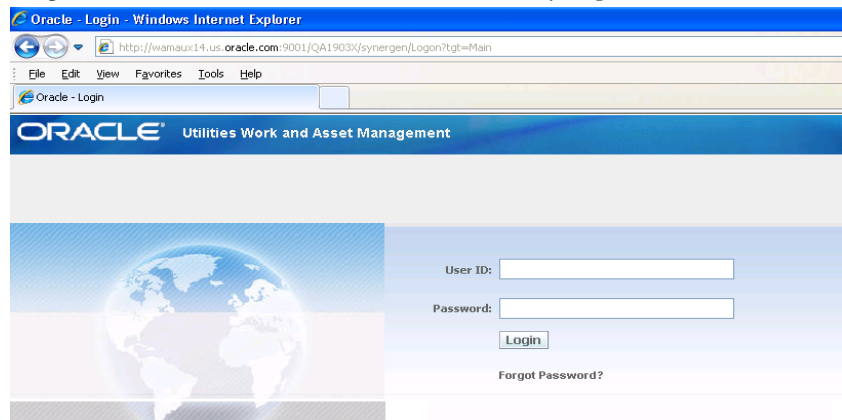
8.13 Navigate to the Control tab and if WLS_Forms and WLS_Reports are running, shut them down and then start them again.



8.14 Navigate to the Deployments page under the Control tab, find the WAM Instance and start it.



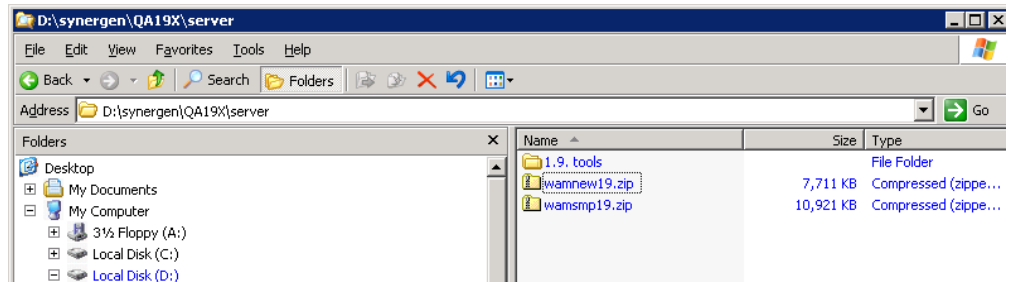
8.15 Launch the application from a client workstation and enter the URL of `http://<hostname:port>/<WAM Instance >/synergen`. For example: `http://wamaux14.us.oracle.com:9001/QA1903X/synergen`



8.16 Login and proceed with testing and configuring the application.

9.0 Load Clean or New Database

After the download of the server components, a directory structure is created in the appropriate folder structure. The folder resembles the following:



Navigate to the server folder. In that folder will be a `wamnew1903.zip` file and a `wamsm1903.zip`. The `wamsm1903.zip` file contains an Oracle Work and Asset Management 1.9.0.3 database export that contains sample data. The `wamnew1903.zip` file is essentially an empty database with no sample data. In addition, there is a `tools` directory that will be used in the steps below.

9.1 Import the Database

In order to import this database several steps need to be executed. An assumption is made that the customer has some familiarity with creating databases and running sql scripts:

- 9.1.1 Create a database prior to importing this sample export.
- 9.1.2 Create an INDX tablespace for the database prior to importing this sample export.
- 9.1.3 Run the createuser.sql script, found in the 1.9.0.3 tools directory, as the system user from a sqlplus session.
- 9.1.4 Do a full import of the wamnew1903 or wamsmp1903 database, depending on your requirements. The file must be uncompressed first.
- 9.1.5 After the import is complete, run the servpk1903.sql script, found in the 1.9.0.3 tools directory, as the synergen user from a sqlplus session.
- 9.1.6 In the event there are objects like the following:
SDBP_MWM_INTEGRATION, PROCEDURE
SDBP_CCB_SERVICE_REQ_INTERFACE, SDBP_JOB_ERROR_LOG
that have not compiled, execute the jobview.sql script, found in the 1.9.0.3 tools directory, as the synergen system user from a sqlplus session.
- 9.1.7 In the event there are objects that have the key word PROJECT in them that have not compiled, do the following:
 - Log into a sqlplus session as the synergen user
 - Run the servpk1903.sql script, found in the 1.9.0.3 tools directory
 - At the sql prompt, connect as projuser/<password>@<db name>
 - At the sql prompt, run the projuser_grantsyn.sql script, found in the 1.9.0.3 tools directory
 - At the sql prompt, connect as synergen<password>@<db name>
 - At the sql prompt, run the recompile.sql script, found in the 1.9.0.3 tools directory
- 9.1.8 Run the cres7syn.sql script, found in the 1.9.0.3 tools directory, as the synergen user from a sqlplus session
- 9.1.9 Run the cres7grt.sql script, found in the 1.9.0.3 tools directory, as the synergen user from a sqlplus session.
- 9.1.10 Log into a sqlplus session as the sysdba user and execute the admin_dbms_job.pkg and admin_dbms_job.pkb located in the 1.9.0.3 tools\s60obj folder.

Post Installation Considerations

After you complete the installation, review the following:

- Provide a grant execute to the DBMS packages listed below. Log into the database as the sysdba owner and execute the commands indicated. (This must be done prior to executing manual scripts)

This adds an “execute” privilege on each package to application users (directly or through a common role). Note that only the ‘SYS’ user is capable of granting privileges to the package. ‘superuser’ is the role in the synergen schema. You can find this by executing the following sql statement in the synergen schema:

select key_value from sa_installation_parameters where key_name like 'SUPER%';

- SYS.DBMS_LOCK

Command: grant execute on dbms_lock to superuser;

- SYS.DBMS_CRYPT0

Command: grant execute on dbms_crypto to public;

- SYS.DBMS_ASSERT

Command: grant execute on dbms_assert to public;

- If your user base requires the ability to use COPY RECORD functionality or needs to access reports from the actions list that are added in the Modules Administration - Forms module Module Reports view, you must also grant access to the all_cons_columns view using the following:

```
grant select on all_cons_columns to SUPERUSER;
```

11G Database

- If you upgraded to Oracle Database 11g, you must run the script 7426686.sql manually.

This is to ensure that e-mail and product integration features function properly. This script creates a default Access Control Lists (ACL) that will grant access from the database to external URLs called by the UTL_HTTP library. You must also grant "execute" permissions on UTL_HTTP to the SUPERUSER role.

- Stop the Oracle Application Server OC4J instance prior to applying the upgrade. Doing so will render the application unavailable to users, so you must schedule the application of this service pack at a time when the application can be taken out of service.
- Configure formsweb.cfg- In the formsweb.cfg file make sure the "archive" setting points to the "frmwebutil.jar" instead of "webutil10123.jar".

Changing this setting ensures that the correct .jar file is referenced: frmwebutil.jar file located in the ...\\forms\\java folder.

Old Setting:

```
archive=frmall.jar,../synergen/jars/webutil10123.jar,../synergen/jars/jacob.jar,../synergen/jars/jspell2n_java11.jar,../synergen/jars/syn.jar,../synergen/jars/synergenpjcs.jar
```

New Setting:

```
archive=frmall.jar,frmwebutil.jar,../synergen/jars/jacob.jar,../synergen/jars/jspell2n_java11.jar,../synergen/jars/syn.jar,../synergen/jars/synergenpjcs.jar
```

- Database Parameters of note:

These database parameters should be considered and set, if applicable, according to your business needs following installation of the upgrade.

- SEC_CASE_SENSITIVITY_LOGON (Oracle Database 11g only)- This is set to TRUE as default you must set this value to FALSE to avoid logon errors related to case sensitive passwords.
- PASSWORD_LIFE_TIME - by default, passwords expire after 180 days, however, expiration is managed within Oracle Utilities Work and Asset Management, so to avoid conflicts, this should be set to UNLIMITED.